



Who is the murderer?

- Sherlock Holmes:** So who do you think has killed Mrs. Robinson in her house?
- Watson:** I don't really know...
- Sherlock Holmes:** My dear Mr. Watson, there are only two people who had keys to the house...
- Watson:** Well, Stanley might have killed her, but I'm not so sure about it.
- Sherlock Holmes:** Stanley has a strong alibi. He can't have done it.
- Watson:** So there is only one person left. It must have been Joanna.
- Sherlock Holmes:** Yes, Joanna must have done it.

Questions

1. Who is the murderer?

2. What does Sherlock Holmes say about Joana?

3. What does Watson say about Stanley?

4. What does Sherlock Holmes say about Stanley?



Let's become detectives ourselves and discover the rules!

1 Read the following sentences and decide 1) whether the speaker is talking about a present or past situation; 2) Underline the modal verbs in these sentences.

- a It might have been Joana's boyfriend, Pete, who had the idea of killing Mrs. Robinson.
- b Stanley can't have killed her as he was attending his friend's party that night.
- c Mr. Robinson must have felt truly shocked about Mrs. Robinson's brutal death.

2 Match the meaning of each modal verb in 1 with these explanations.

- a The speaker is almost certain that something was the case.
- b The speaker is almost certain that something was not the case.
- c The speaker is not certain that something was the case but thinks it is possible.

3 Which structure follows the modal verbs in each sentence in 1? Complete the chart.

Subject	+	modal verbs	+
---------	---	-------------	-------	---	-------

4 When do we use this structure?

We use this structure to _____

5 Explain these three sentences.

It might have been John at the door. *You are sure/unsure that*

It can't have been John at the door. *You are sure/unsure that*

It must have been John at the door. *You are sure/unsure that*

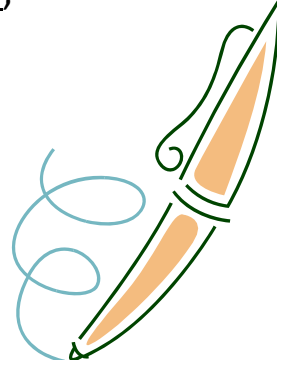
6 Explain the difference between these two sentences

It might have been John at the door. *You are sure/unsure that*

It might be John at the door. *You are sure/unsure that*

Restricted Output II: Gap-Fill Exercise

Complete the sentences with must have + past participle,
might have + past participle or can't have + past participle.



1. John looks very tired. He _____ (have) a hard day.
2. You _____ (finish) your homework. You started only 5 minutes ago.
3. She _____ (be) in the disco last night, but I'm not sure.
4. You _____ (see) the new Shrek movie. It hasn't been made yet.
5. She was late for her job interview. She _____ (miss) the train.
6. He didn't come to school this morning. He _____ (oversleep). It's so typical for him.
7. I can't find my umbrella. I _____ (leave) it in the train or somewhere in my office. I just don't know.
8. He's not answering the phone. He _____ (go) to sleep already. He always goes to bed very early.

Student A

I saw Mary yesterday. Why do you think she was ...?

- crying
- dancing in the street
- looking very tired
- wearing a wet suit
- laughing
- smiling at everyone



Student B

I saw Jim yesterday. Why do you think he was ...?

- running down the street
- wearing one brown and one black sock
- sleeping on a park bench
- driving through red traffic lights
- coming out of the airport
- wearing his pajamas

